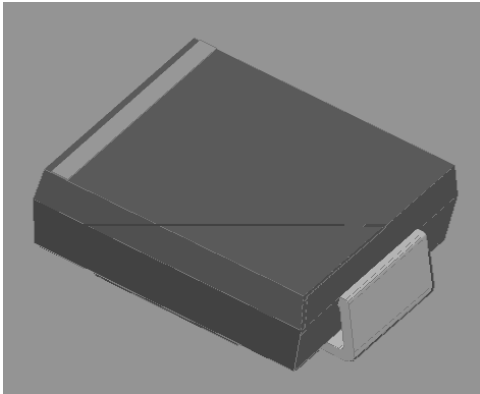


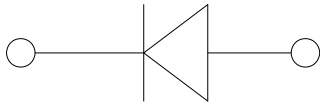
# SS82Q THRU SS84Q

RoHS  
COMPLIANT



## Typical Applications

RU XVH LQ ORZ YRQWQBHLQYUJHJZKH HOLQJ  
'&' FRQYHUWHUM DQGV RQDWLW\ SURWHFV  
DSSOLFDWLRQV



## Mechanical Data

" Package '2 \$% 60&  
0ROGLQJ FRPSR/QG PHHVDPPDELOLW\  
UDWLQJ 5R+6 FRPSOLDQW  
" Terminals 7LQ SODWHG OHDGV VROGHUDEOH S  
- 67' DQG -(6' %  
Polarity: &RORU EDQG GHQRWHV WKH FDWKRGH

## vMaximum Ratings 7D 8QOHVV RWKHUZLVH VSHFLILHG

PARAMETER	SYMBOL	UNIT	SS82Q	SS84Q
'HYLFH PDUNLQJ FRGH			66	66
5HSHWLWLYH SHDN UHYHUVH YROWDJH			9	
0D[LPXP 506 YROWDJH	9 <sub>506</sub>		9	
0D[LPXP '& EORFNLQJ YROWDJH	9 <sub>&amp;</sub>		9	
0D[LPXP DYHUDJH IRUZDUG UHEWLILHG FXUUHQW DW 7 \$				
6XUJH QRQ UHSHWLWLYH IRUZDUG FXUUHQW \$ # +] KDOI VLQH ZDYH - F\FOH 7				
9ROWDJH UDWH RI 5FKDQJH UDWHG 69 GW		9 V		
6WRUDJH WHPHUDWXUH	7 <sub>vWJ</sub>	-		a
-XQFWLRQ WHPHUDWXUH	7 <sub>.</sub>	-		a

## vElectrical Characteristics 7D 8QOHVV RWKHUZLVH VSHFLILHG

PARAMETER	O				
	F	I <sub>F</sub> 18A	T <sub&gt;12< sub=""> }</sub&gt;12<>		9
			7. -		
5HYHUVH FXUUHQW	5	5DWHG 9	7. -		\$
			7. -		P\$
7\SLFDO MXQFWLRQ FDSDFLWDQFH		5 9   0+]		9	S)

v7KHUPDO & KDUDFWHUBQWHW RWKHUZLVH VSHFLILHG

3\$5\$0(7(5		6<0%2/	81,7	66 4	66 4
7KHUPDO	%HWZHHQ MXQFWLRQ	DQG DPELHQW	-		
5HVLVWDQFH	%HWZHHQ MXQFWLRQ	DQG OHDG			

1RWH

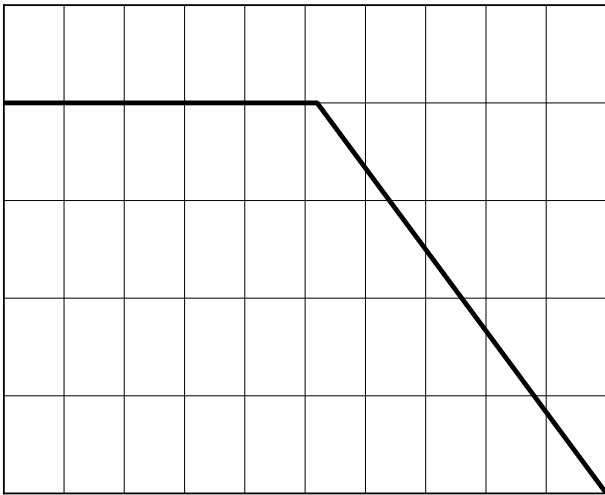
7KHUPDO UHVLVWDQFH DPELHQW FOLQORRG GRFXOWRG WQ 3 & % ZLWK [U SDG DUHDV PP

v2UGHULQJ , QIRUPDVLHQ

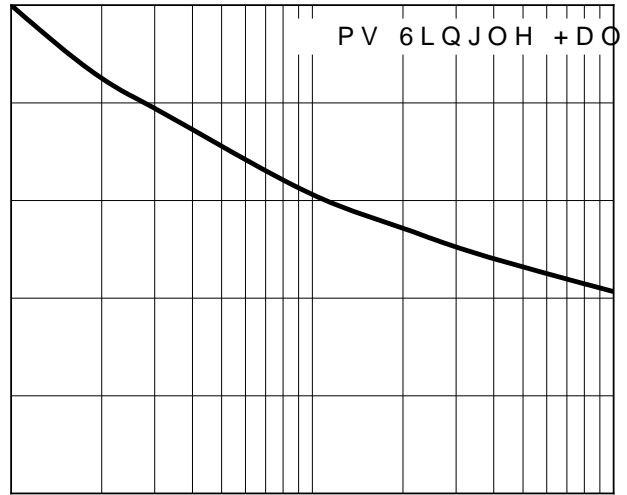
35() (5(' 3 1	3\$&.\$*( &2' (	81,7 : (, *+7 J	0,1,080 3\$&.\$*( SFV	287(5 &\$5721 48\$17,7< SFV	'(/,9(5< 02' (
66 4a66 4	)	\$SSUR[LPDW			

v & KDUDFWHULSLWDFV

)LJ )RUZDUG & XUHQW 'HUDWLRQJ) & XUYD[LXP 1RQ 5HSHWLWLYH 3HDM

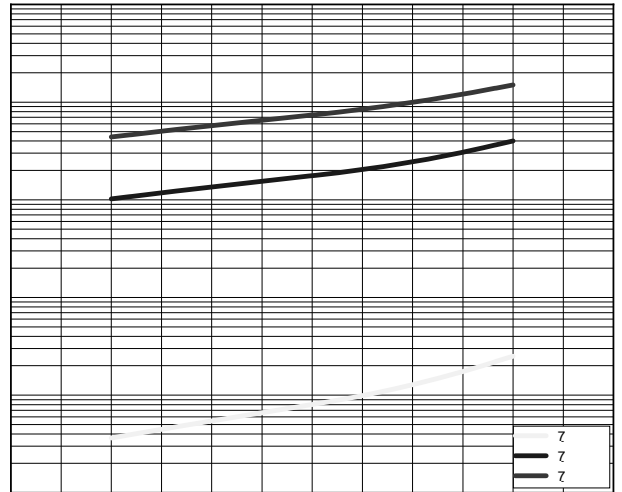
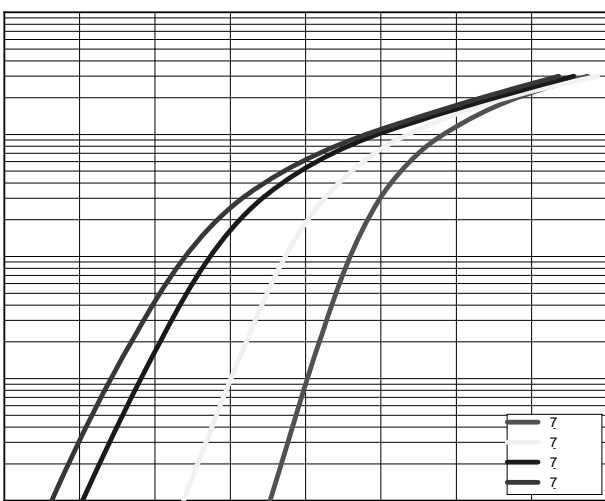


/HDG 7HPSHUDWXUH



1XPEHU\RD&V DW +]

)LJ 7\SLFDO , QVWDQWDQHRXV )RUZDUG & KDUDFWHULSLWDFV HUVH /HDNDJH

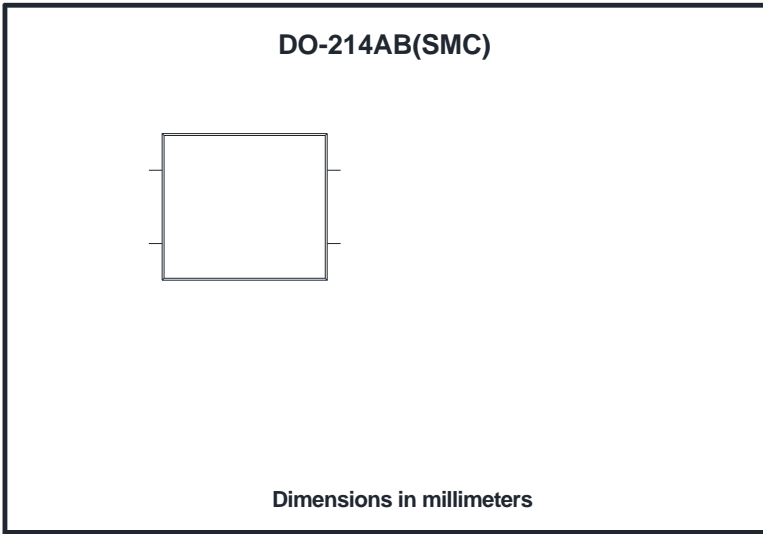


, QVWDQWDQHRXV )RUZDUG 9ROWDJH 9 3HUFHQW RI 5DWHG 3HDN 5HYH



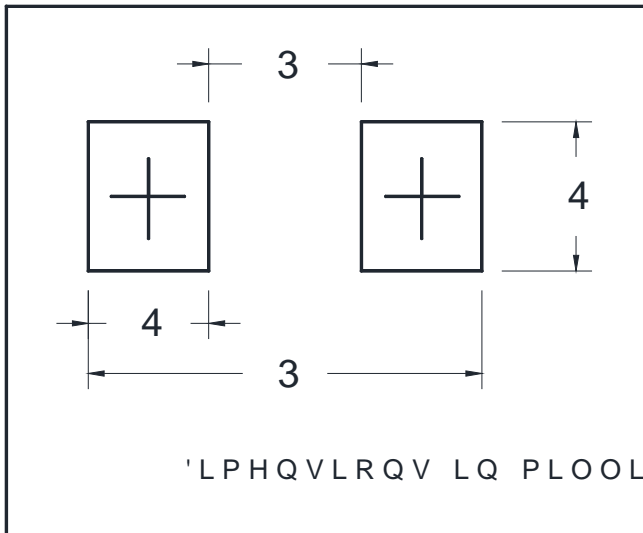
# SS82Q THRU SS84Q

## vOutline Dimensions



'2	\$%	60&
'LP	0LQ	0D[
\$		
%		
&		
'		
(		
)		
*		
+		

## Suggested pad layout



'2	\$%	60&
'LP	0LQ	
3		
3		
4		
4		



# SS82Q THRU SS84Q

---

## Disclaimer

7KH LQIRUPDWLRQ SGRFWRUHQW LQ IRKLVHDIHQJHQRK BQJMLH (OHFWURQLF 7HFHQRO  
ULJKW WR PDNH FKDLFHVRZLWKR XWSKRLSULFDGXKFRV/ RGLWSOD\HG KHUHLQ WRGLFVSLWRQ  
RU RWKHUZLVH

7KH SURGXFWOLVGHV\KJLHGL WR EH MVHGHZWWUR QXFRB EUMXORWL GPHLG QFHDIRO\XVW  
DLQLQJ RU<DQJMMBURU VQ\BQKDRQ LDV\XSPRQVQ ELOLW\ RU OLDELOLW\ IRULDSURSDP  
HU XVH RI VDOH

7KLV SXEOLFDWLRQ SVXSSFHUW DGJVLQURQ\PDVSLRQLSGHYRUR XVG GLWLRQDO LQWRHUPDWLR  
KWWZZ \DQJMLHRFRFRQVXOW \RXU QHDUHW <DQJMLVHM\QVFBHOHV RILFH IRU IXUW